

31 Great Alpine Road, Bruthen Vic 3885  
PO Box 101  
Phone: (03) 5157 5445  
Email: bruthen.ps@education.vic.gov.au  
Acting Principal: Tina Tallberg

**RESPECT COURAGE HONESTY TEAMWORK FUN**

## Newsletter Term 1, Wednesday 18th of March

**School Council Members – President:** Sarah Kennedy **Vice President:** Lucy Whilance **Secretary:** Kathleen Callow  
**Treasurer:** Kelsey Schueler **Executive Officer:** Tina Tallberg; Lahnie Tong, Sarah Patterson, Stephanie Cooke and Rachel Rogers, Jade Simpson, Alyson Nichol

### MARCH

**Friday 20<sup>th</sup>** - Harmony day. (**Dress in Orange**)  
**Monday 23<sup>rd</sup>** - MARC Van / School Council AGM  
**Wednesday 25<sup>th</sup>** - Discover Nagle Year 7, 2027 Enrolments/  
Division Lawn Bowls  
**Friday 27<sup>th</sup>** - Student Led Assembly

### APRIL

**Thursday 2<sup>nd</sup>** - Last day of School - 1:30pm Dismissal  
**Friday 3<sup>rd</sup>** - **Good Friday**  
**Monday 6<sup>th</sup> - Friday 17<sup>th</sup>** - School Holidays  
**Monday 20<sup>th</sup>** - Term 2 Commences / MARC Van  
**Wednesday 22<sup>nd</sup>** - School Photos

Dear Families,

Our annual Cross-Country event was held last week at the Bruthen Football Oval, and the new location proved to be a great success. The oval and Rail Trail provided plenty of space for students to run and for families to cheer them on.

All students showed fantastic determination and sportsmanship as they completed their races. It was wonderful to see everyone encouraging each other and giving their best effort.

The top six place getters in the 10, 11 and 12 year old age groups will now progress to the next division of competition. Congratulations to these students and good luck at the next stage!



**MONDAY 23<sup>rd</sup>**  
**MARCH**

**Staff Room**

6:00pm - 7:00pm





# CROSS COUNTRY



## MORNING DROP OFFS

There are still a number of students arriving before 8:30am. Please note that there are **NO STAFF ON DUTY before 8:30am**. We understand there are some families that have made prior arrangements which have been agreed upon.

Please see Tina if you have any questions

## FOUNDATION/GRADE 1 WRITING

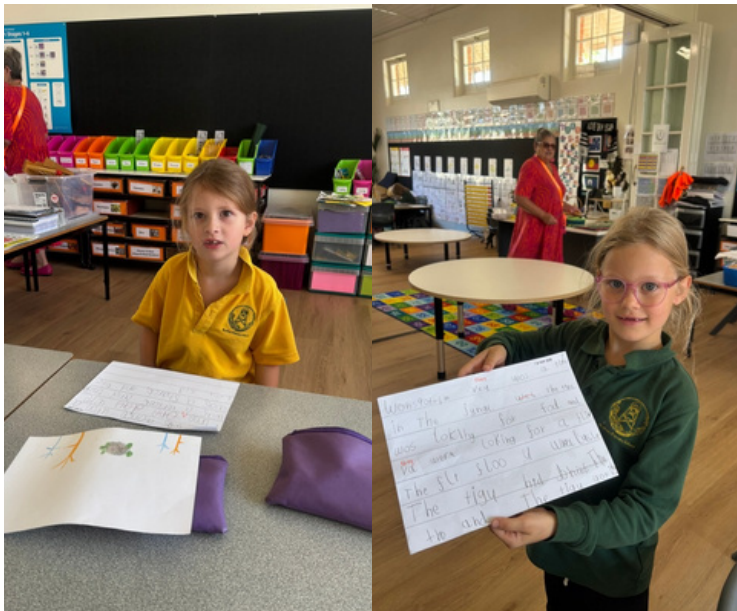
Over the past few weeks, F/1 students have been learning about how sentences work and how to turn their ideas into clear and interesting writing.

In the beginning of Foundation, this involves expressing ideas with pictures and orally saying a sentence.

One of the ways students have been learning to write sentences is through Colourful Semantics. This approach helps students understand the different parts of a sentence by using colours to organise their ideas. Students learn to think about **who** the sentence is about, **what** they are doing, **where** it is happening, and **when** it is happening.

By using these colour prompts, students are learning how to build strong sentences step by step. It has been wonderful to see students confidently talk about their ideas before writing them down.

They are beginning to write longer and more detailed sentences and are proud to share their work with their classmates. We look forward to seeing their writing continue to grow throughout the year!



## SCHOOL CHOIR



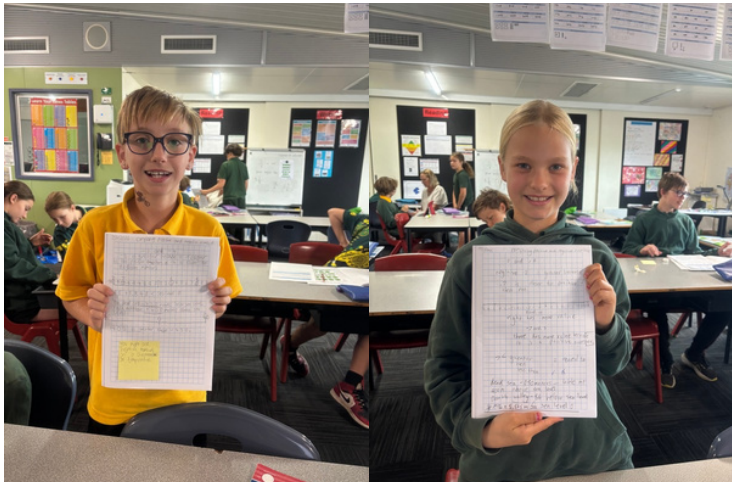
Mrs Ayling and the Choir are busy on Wednesday's practising their singing.

## GRADE 4/5/6 LEARNING

Students in the Grade 5/6 have been working hard in Maths, developing their understanding of integers and fractions. They have been exploring how positive and negative numbers work on a number line and learning how to compare, order and solve problems using integers.

Students have also been building their knowledge of fractions. They have been practising how to find equivalent fractions, add and subtract fractions, and apply their learning to real-life problem solving tasks.

It has been fantastic to see students challenging themselves, explaining their thinking and supporting each other as they develop confidence with these important mathematical concepts.



## KEY WORD SIGN (KWS)

This year our students and staff will begin learning key word sign. Key word sign (KWS) is a communication strategy designed to help children and adults with communication difficulties. KWS is used alongside spoken sentences so a person can see and hear the message at the same time.

This enhances communication by reducing frustration and accelerating language development for children and adults with communication delays. It boosts comprehension, promotes attention, and aids visual learners by using hand signs alongside spoken words. KWS is versatile, suitable for all ages, and can be used in any situation. Stay tuned in upcoming newsletters for the KWS we are learning.



Toilet



eat

Close dominant fingertips onto ball of thumb. Tap formation on chin, twice.

## NAPLAN

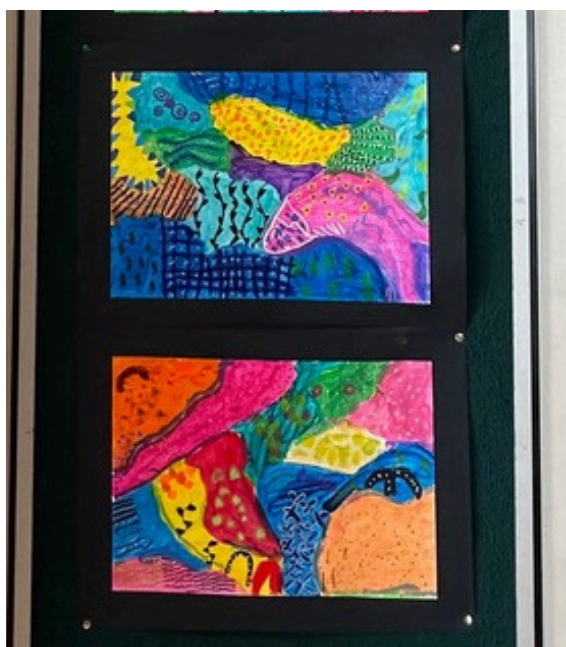
We are incredibly proud of our Year 3 and Year 5 students for the positive way they approached and completed their NAPLAN assessments. Despite the unexpected delay caused by the initial NAPLAN platform outage, students showed great resilience, patience and flexibility as they adapted to the change in schedule.

Throughout the testing period, they demonstrated focus, determination and a willingness to do their very best. It was wonderful to see their confidence grow as they tackled each challenge and we commend them for the mature and responsible attitude they displayed.

Regardless of the outcomes, their effort and perseverance are something to celebrate. Well done to all our students- We are very proud of you!



# ART



# STUDENT LED ASSEMBLY

This year we will continue with our student led assembly. These will take place on the last Friday of the month. Assemblies are a wonderful opportunity for students to share their learning with family and the community.

## 2 / 3 LEARNING

Year 2/3 students are learning that good writers don't just write, they refine, reflect and improve.

They have been working hard at improving their writing by thoughtful editing of their work. They are learning to include sizzling starters to their stories, reread sentences, improve word choices (like the inclusion of adjectives), check their punctuation and identifying spelling errors. It's been wonderful to see their pride when they take ownership of their writing!

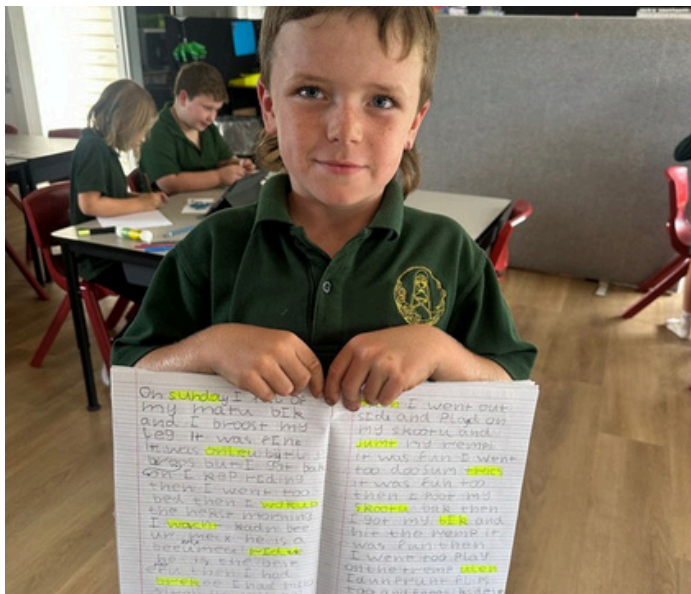
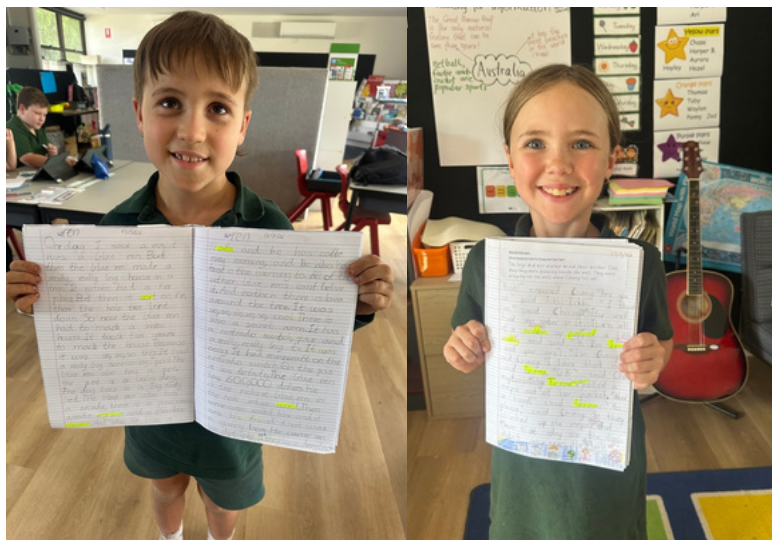


Photo credit D. Sullivan

### Pelicans of the Gippsland Lakes

BirdLife Australia illustrated talk with pelican expert Deb Sullivan

Tuesday 31 March 2026  
6.00 pm - 7.30 pm

Forge Theatre  
80 McKean St, Bairnsdale

Free ticket bookings available online  
[eastgippsland.vic.gov.au/leisure/whats-on-and-buy-tickets](http://eastgippsland.vic.gov.au/leisure/whats-on-and-buy-tickets)



Proudly supported by East Gippsland Shire Council



## SUN SMART



Term 1 means hats on heads. Please put your child's name on their hat so if lost it can be returned.



**CANNOEING  
BUSHCOOKING  
RAFT BUILDING  
BOAT TRIP  
INDOOR CLIMBING  
COMBAT ARCHERY  
BIBLE CHATS  
AND MORE!!**



**CAMP COOLAMATONG  
HOLIDAY PROGRAM  
REGISTER NOW**



**GRADES PREP – 6**

**13<sup>th</sup> – 17<sup>th</sup> APRIL**

**8:30am – 5:15pm**

**CAMP COOLAMATONG**

**FARMUCAMP  
BAIRSNDALE!**

<https://su.org.au/events/camp-coolamatong-holiday-program>

**NEED HELP COVERING COSTS?**

**GOGGLESEARCH: 'GET ACTIVEVICTORIAVOUCHERS' & use**

**Code: 3676236 to apply!**

**Email: coolamatong@su.org.au for more info**

Neighbourhood Houses  
The Heart of Our Community

GIPPSLAND  
Community  
Foundation

Bruthen & District  
Neighbourhood House

**FREE  
COMMUNITY  
PLAYGROUP**

# Little Legend's

Please bring a  
peice of fruit &  
water bottle

Held @ Bruthen Primary School

Every Thursday  
during Term  
**9:30AM- 11:00AM**

Outdoor play, games, kids crafts, music, dress-up days, story telling  
- kindergarten and much more!

Are you looking for a fun and enriching experience for your little one?  
Then look no further than Little Legends Play Group! Designed for children ages  
0-5, our playgroup offers a vibrant and engaging environment where young  
minds can thrive.

Each week with Kellie brings a new adventure, with activities ranging from  
active play to creative art projects and musical exploration. We also incorporate  
story time and music sessions to spark imagination and foster a love of learning.

Little Legends Play Group is more than just playtime - it's a chance for you and  
your child to develop socially, physically, and emotionally in a supportive and  
stimulating setting.

**FOR MORE INFO CALL 850NH 0497 544 490**

**Bairnsdale  
SECONDARY COLLEGE**

RESPECT  
RESPONSIBILITY  
RESILIENCE

## 2027 Year 7 - Information Evening

**Wednesday 29<sup>th</sup> April 2026**

**5.00 pm to 7.00 pm**

Bairnsdale Secondary College invite students, parents, and carers to  
our Information Evening for 2027 Year 7 students.

Time	Item	Location
5.00 pm to 6.00 pm	McKean Street Campus open to tour and chat with staff and students from Key Learning Areas including English, Maths, Science and PE.	Year 7 Hub, Science Centre and Inclusion Hub
6.00 pm to 7.00 pm	Information Session - Presentation from current Year 7 students and student leaders.	Malgobila Building

For further enquiries please contact us on 5150 4800 or at [bairnsdale.sc@education.vic.gov.au](mailto:bairnsdale.sc@education.vic.gov.au)

The enrolment process begins in early Term 2.

Information will be distributed initially via your Primary Schools.

For Government Primary Schools

Your Primary Schools will distribute an Application for Year 7 Placement early in Term 2

For Non-Government Primary Schools

Your Primary School may provide an Application for Year 7 Placement early in Term 2,  
if you do not receive one please contact the College directly.

## LITTLE LEGENDS

**Come and join the fun.**

Every Thursday 9:30am-11:00am  
at the sports' shed.

### DISCOVER NAGLE YEAR 7 INFORMATION EVENING

We welcome you and your family to discover firsthand what makes our College community so special - from our welcoming learning spaces to the natural beauty that surrounds us.



There are 3 information sessions, followed by the opportunity to explore our campus:

**Wednesday 25 March**

**4.00pm, 4.45pm & 5.30pm**

Sessions are limited.  
Bookings essential.

SCAN HERE  
TO BOOK

### ENROLMENTS ARE NOW OPEN YEAR 7 2027



Enrolment Applications are now open for families seeking to join the Nagle Catholic College community for Year 7 in 2027.

To assist with timely processing, please ensure required documents are provided at time of application.

APPLY TODAY

APPLICATIONS CLOSE FRIDAY 18 MAY 2026

For further information, visit our website: [www.nagle.vic.edu.au](http://www.nagle.vic.edu.au)



Bruthen & District  
Neighbourhood House

FOR MORE INFORMATION  
CALL OR SMS  
0497 544 490

# LITTLE LEGEND'S TWEEN - AGES 9-13 LEVEL-UP

EXPLORING INDEPENDENCE  
FRIENDSHIP & BELONGING  
LIFE & SOCIAL SKILL GROWTH  
NAVIGATING CHANGE & TRANSITION  
SELF ESTEEM & STRENGTHS  
SAFE ENVIRONMENT

EXPLORE INDEPENDENCE  
SOCIAL EXPERIENCE  
NETWORKING  
GAMES  
ART & CREATION  
MUSIC & DANCING  
FASHION  
COOKING SESSIONS  
GROUP EXCURSIONS/ DAY CAMPS  
MOVIE & GAMING NIGHTS  
YOUTH LEAD ACTIVITIES

TWEEN SOCIAL GROUP  
AGES 9-13

4:00PM - 6:00PM  
EVERY WEDNESDAY  
DURING SCHOOL TERMS  
36 MAIN STREET BRUTHEN  
FREE PROGRAM AGES 9-13 SIGN UP TODAY  
COME & TRY SESSIONS WELCOMED  
GUARDIAN SIGN IN REQUIRED

Little Legend's 0-13 is a B&DNH initiative supported by the Gippsland Community Foundation. Bruthen & District Neighbourhood House thanks GCF for their ongoing support which allows us to continue working towards a stronger, more resilient community. We deeply value our partnership with GCF and our shared commitment to fostering growth in our region!

GIPPSLAND  
Community  
Foundation

Like us on  
facebook