



**Bruthen
Primary School**

"Learning for Life"

31 Great Alpine Road, Bruthen Vic 3885
PO Box 101

Phone: (03) 5157 5445

Email: bruthen.ps@education.vic.gov.au

Acting Principal: Emily Forbes

RESPECT

COURAGE

HONESTY

TEAMWORK

FUN

Newsletter Term 2 Wednesday 10th June 2026

School Council Members – President: Sarah Kennedy Vice President: Lucy Whillance Secretary: Kathleen Callow Treasurer: Kelsey Schueler
Executive Officer: Emily Forbes; Lahnie Tong, Emily Earles, Rachel Rogers, Sally Whillance, Jade Simpson and Nicole Hood

Upcoming Events

June

Friday 12th – Division Winter Sports Bairnsdale

Monday 15th – School Council Meeting 6pm

Monday 15th- MARC Van

Friday 19th- Division Winter Sports Backup

Monday 22nd- Wednesday 24th – Grade 3/4 Camp

Friday 26th – Whole School Assembly @1.15pm

Term 2 ends 1.30pm

July

Monday 13th- Term 3 begins

Thursday 23rd- Mitchell Cluster Athletics

Wednesday 29th- Region Teeball (some senior students might be involved)

PRINCIPAL'S REPORT

Over the past fortnight, I have continued to be extremely proud of our students and the way they embrace every learning opportunity. It has been wonderful to visit classrooms and observe students actively engaged in a range of hands-on learning experiences, from mathematics games and challenges to science investigations and experiments. Following a recent incursion, students have even begun designing and building frog habitats in the school yard, bringing their learning to life in a meaningful and authentic way.

The highlight of the fortnight was undoubtedly our Whole School Reconciliation Assembly. Our students made me incredibly proud as they confidently shared messages about the importance of reconciliation and highlighted the ways our school community strives to demonstrate respect, inclusion and understanding each day. It was fantastic to see so many families attend and support this special event.

A special thank you to Nicki for the tremendous work she put into organising the day and supporting students to confidently lead the assembly. I would also like to thank Alison and our amazing choir, whose moving performance of 'We Are One' was a standout moment and a fitting reflection of this year's theme, All In.

Special Incursion

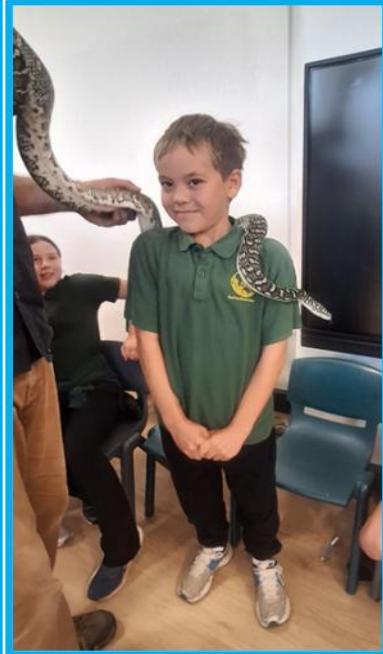
Last Wednesday we were very fortunate to have a free incursion provided for our students. East Gippsland Catchment Management and Black Snake Productions together with the Bairnsdale Art Gallery provided a full day of activities for our F-6 students.

Each group had a session learning about different species that live in East Gippsland and we all had the opportunity to interact with them. There were a number of different species on show, including a blue tongue lizard, lace monitor, carpet python, turtles, fruit bat, masked owl and swift parrot. We all learnt about their habitats and how close to extinction some of these animals and birds are. We also learnt what we can do to help these creatures avoid extinction – including building Frog Hotels!

We then had an art session where we were able to paint our own animal or bird garden stake or magnet. All students did a fantastic job of this!

We had a great day! A huge thank you to the above organisations for bringing this to our school and ensuring awareness around the beautiful animal and bird species that live in our part of the world.







Semester One Reports

Semester One reports will be available to families via uEducateUs on Wednesday 24 June. Reports provide an opportunity to reflect on and celebrate the learning, growth and achievements of our students throughout the first half of the year. We encourage families to take some time to read through the report with their child and acknowledge the effort they have put into their learning. As some teachers are currently participating in protected industrial action, some reports may include teacher judgements only and not contain written comments. Families wishing to receive a paper copy of their child's report are asked to contact the school office.

Foundation 2027 Enrolments and School Tours

We are now taking Foundation enrolments for 2027 and invite families to contact the office to arrange a school tour.

School tours are a wonderful opportunity to see learning in action, meet our staff and students, and gain a deeper understanding of our programs, supports and school community. Even if you already have a child attending our school, a tour can be a valuable way to begin preparing younger siblings for their transition to Foundation.

If you have a child starting school in 2027 or know of a family who may be interested in joining our community, please contact the office to arrange a visit.

Tucker Tuesday

Our Grade 4/5/6 chefs were back in the kitchen this week and once again cooked up a storm! On the menu was a delicious chicken fried rice, followed by a mouth-watering chocolate cake for dessert. It is always fantastic to see students developing their cooking skills, working together and taking pride in preparing food for others. We can't wait to see what is on the menu for the next Tucker Tuesday!

Menu for Tuesday 16th June: Main: Bolognaise Bake & Dessert: Raspberry Swirl Cake.

Emily Forbes

Acting Principal



School Council meeting on **Monday** 15th June.

SCIENCE UPDATE

During Science sessions this term, we have been looking at the Chemical Science strand with the "Mixtures" unit being our focus.

Last week 2/3 students looked at skittles and how they react (dissolve) in liquids.

F/1 looked at how colour absorbs on different papers making paper towel rainbows.

4/5/6 made carbon dioxide using bicarb and vinegar in zip lock bags and watched how the gas filled up the plastic bag.

There were lots of predictions about what might happen and lots of curious minds working out questions in relation to each experiment. We are all learning a lot about how different mixtures react!



Susie Grinter
Science Teacher

BOWLS

Last Tuesday our bowls team competed at division level in Bairnsdale against 7 other schools. We had some very competitive games and overall, our team came in 4th out of 8. The winning team for the day were Paynesville PS.

Congratulations to Maddi, River, Macy, Eddie, Zander, Riley and Lylah who represented Bruthen Primary School in an outstanding manner.

I would like to sincerely thank our local Bowls club at Bruthen for the support they offer our kids. We have had lots of practises, with all the volunteers from BBC giving up their time so that we can learn a new sport and be competitive. Thanks Alison, Ken, Peter, Sandy and Les for being awesome coaches! The bowls club are always looking for new members so why not take your kids down and have a go! It is a great sport!



Susie Grinter
Science Teacher

COMMUNITY NEWS

NEW! East Gippsland Shire Council
KINDERGARTEN CENTRAL REGISTRATION SERVICE

Is your child attending a funded 3- or 4-year-old kindergarten in 2027?

From April 2026, families can register for 3- or 4-year-old kindergarten through Council's Central Registration Service

Contact the Early Years Team:
 earlyyears@gipps.vic.gov.au 031 5153 9500

Scan the QR Code

NEW! East Gippsland Shire Council
KINDERGARTEN CENTRAL REGISTRATION SERVICE

The Central Registration Service ensures the process of registration and enrolment is simple, consistent, inclusive and equitable. It provides a single point for families to register for multiple kindergarten services.

To allocate kindergarten places in line with the Department of Education's Priority of Access criteria

First round offers open 1 April 2026 & close 30 June 2026. You can complete a pre-registration form at any time.

Scan the QR code or visit our website to complete an online registration form.

Register for kindergarten in 4 easy steps:

1. **Register** - Family completes an online form
2. **Allocate** - Council carefully reviews all registrations and allocates kindergarten places
3. **Confirm** - Families receive a kindergarten offer
4. **Enroll** - Families complete the child's enrolment directly with the kindergarten.

Contact the Early Years Team:
 earlyyears@gipps.vic.gov.au 031 5153 9500

Scan the QR Code

Little Legends

Come and join the fun.
 Every Thursday 9:30am-11:00am at the sports shed during the School Term.

Neighbourhood Houses The Heart of Our Community
 Gippsland Community Foundation
FREE COMMUNITY PLAYGROUP

Little Legend's

Please bring a piece of fruit & water bottle
 Held @ Bruthen Primary School
Every Thursday during Term 9:30AM-11:00AM
 Outdoor play, games, kids crafts, music, dress-up days, story telling - *Kindergarten* and much more!

Are you looking for a fun and enriching experience for your little one? Then look no further than Little Legends Play Group! Designed for children ages 0-5, our playgroup offers a vibrant and engaging environment where young minds can thrive.

Each week with Kellie brings a new adventure, with activities ranging from active play to creative art projects and musical exploration. We also incorporate story time and music sessions to spark imagination and foster a love of learning.

Little Legends Play Group is more than just playtime - it's a chance for you and your child to develop socially, physically, and emotionally in a supportive and stimulating setting.

FOR MORE INFO CALL 862PM 0497 544 490

Bruthen & District Neighbourhood House
 FOR MORE INFORMATION CALL OR SMS 0497 544 490

LITTLE LEGEND'S
 TWEEN-AGES / CHD

LEVEL-UP

TWEEN SOCIAL GROUP AGES 9-13

4:00PM - 6:00PM
EVERY WEDNESDAY DURING SCHOOL TERMS
38 MAIN STREET BRUTHEN
FREE PROGRAM AGES 9-13 SIGN UP TODAY

- EXPLORE INDEPENDENCE
- SOCIAL EXPERIENCE
- NETWORKING
- GAMES
- ART & CREATION
- MUSIC & DANCING
- FASHION
- COOKING SESSIONS
- GROUP EXCURSIONS/ DAY CAMPS
- MOVIE & GAMING NIGHTS
- YOUTH LEAD ACTIVITIES

EXPLORE INDEPENDENCE FRIENDSHIP & BELONGING LIFE & SOCIAL SKILL GROWTH NAVIGATING CHANGE & TRANSITION SELF ESTEEM & STRENGTHS SAFE ENVIRONMENT

Little Legend's 0-13 is a BCDNH initiative supported by the Gippsland Community Foundation, Bruthen & District Neighbourhood House thank GCF for their ongoing support, which allows us to continue working towards a stronger, more resilient community. We deeply value our partnership with GCF and our shared commitment to fostering growth in our region.



GREAT ALPINE GALLERY

COLOURS OF WINTER EXHIBITION

19 JUNE – 19 JULY 2026

Showcasing seasonal art that embraces both the beauty and the edge of winter, crisp air, glowing nights and the spark of life beneath the surface.

OPENING EVENT: FRIDAY 3 JULY, 5PM

Opening times 10.30am to 3.30pm
 Closed Tuesdays Wednesdays
 6881 Great Alpine Road, Swifts Creek 3896
greatalpinegallery@gmail.com M 0408 523 498



MIXED BAG

An art exhibition in mixed media.
 18TH TO 20TH SEPTEMBER 2026

SAVE THE DATE!

Bruthen's Mixed Bag Art Exhibition is coming so it is time to get to work on this years entries.

2D and 3D entries are invited.
 Entry fee \$10 per item.
 Prizes to be announced closer to the exhibition.

Proudly produced by Bruthen Arts and Events Council Inc




HOLIDAY *intensive* SWIM PROGRAM

FAST TRACK YOUR CHILDS SWIMMING ABILITY!

Monday 6 - Friday 10 July 2026
Cost \$65.00 for ages 3 and up

On confirmation of booking a \$20 deposit will be required to secure your child's spot.

Enrolments due Friday 26 June

DAILY 30 MINUTE LESSONS OVER 5 DAYS!

ENROL ONLINE OR SCAN THE QR CODE





43 Palmers Road, Lakes Entrance
 (03) 5155 333
lakesaquadome.com.au



ALL WELCOME Community Pantry

Bruthen, your community has your back — we all do it tough at times

No shame, No judgment, No hunger



Call or SMS 0497 544 490 to make an appointment

Support appointments available during working hours or after hours by appointment

Pantry stocked by multiple sources including community donations, Foodbank Victoria, StreetSmart Australia and the Neighbourhood House

Items stocked according to availability



